



The SKYWAY[®] Anterior Cervical Modular Plate System is the ideal solution for supplemental anterior fixation of the TESERA[®]-K SC Cervical Cage.

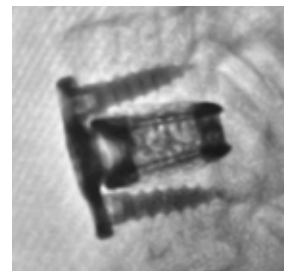
Easy as...two, three, four.



- Stackable for multilevel constructs
- Independent locking tabs offer reliable, hassle-free anti-migration
- Plates can be locked to the cage for rigid assembly
- Streamlined instrumentation allows simultaneous insertion of plate-cage constructs in a single step
- 4.0mm and 4.5mm diameter self-drilling screws



THE PERFECT PAIRING... Tesera[®]-KSC &  SKYWAY[®]





Available in 4 sizes: 10mm, 12mm, 14mm, 16mm

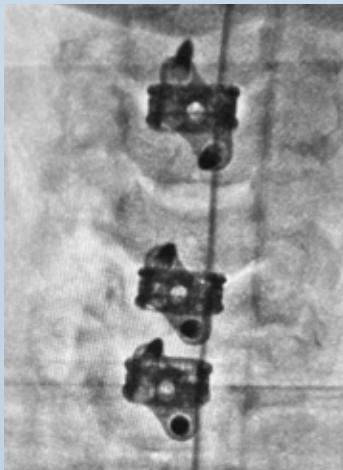


SKYWAY[®]



Multiple Interbody Levels:

2-Hole and 3-Hole plates can be used up to 2 contiguous cervical levels (C2 – T1) when attached to K SC cages.



4-Hole plates can only be used at one cervical level (C2 – T1) when left attached to the K SC cages.