

Tesera[®]-K SC

Anterior Cervical Interbody Fusion System

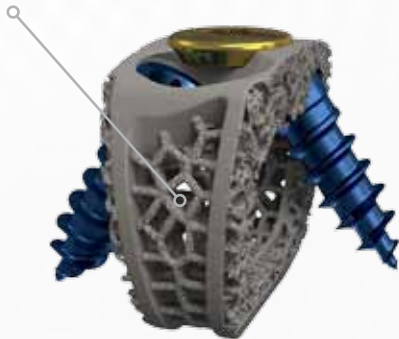


REVOLUTIONARY DESIGN

Tesera[®]-K SC features our Resilience[®] low-modulus technology in a 2-screw, 3D-printed standalone cervical system. Streamlined instrumentation designed for ease of use, maximum visibility and fewer instrument swaps makes implanting Tesera[®]-K SC simple, and a single-step locking screw ensures confidence without compromise.



RESILIENCE[®]
TECHNOLOGY

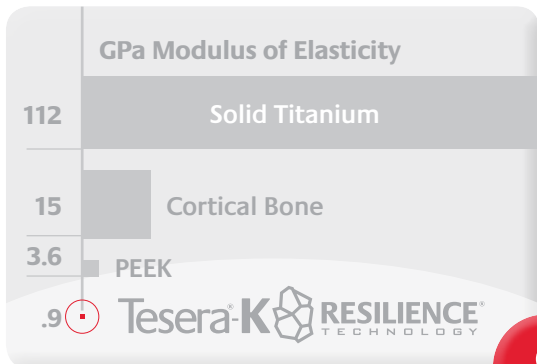


SAFER INSERTION

Tesera[®]-K SC screw angles minimize the risk of soft tissue injury during insertion. Advanced inserters feature integrated drill guides for easier screw placement.

ABOUT RESILIENCE[®] TECHNOLOGY

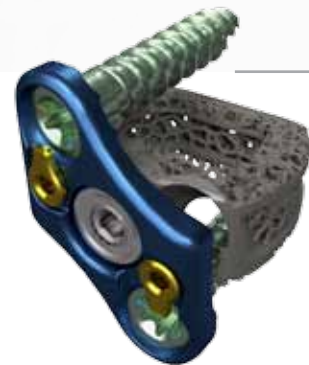
Our dual-wall lattice structure allows for ultra-low stiffness compared to traditional PEEK or titanium implants, reducing stress shielding and subsidence. Tesera[®]-K implants are 3x less stiff than PEEK, and with the modulus range of cancellous bone.



Elasticity of

.9

* Average values for Tesera[®]-K SC. Other product data on file with Kyocera.



SKYWAY[®]

Anterior Cervical Modular Plate System

FULL ARRAY OF SIZES

Tesera®KSC implants are available in 3 footprints and 3 lordotic angles, with 2 screw hole cage heights ranging from 6mm to 11mm, and a no screw hole option at 5mm, allowing for adaptability to each patient's anatomical needs.

LORDOTIC ANGLES



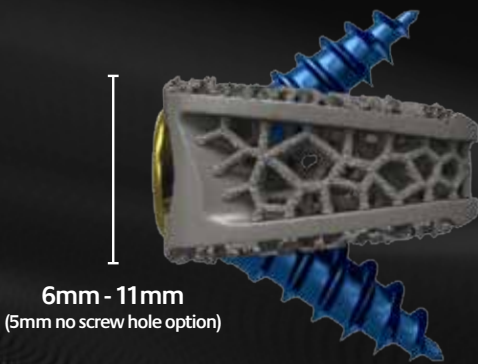
FOOTPRINTS

SCREW OPTIONS

PRIMARY / 4.0mm Diameter / Fixed Angle Self-Drilling



RESCUE / 4.5mm Diameter / Fixed Angle Self-Drilling



Tesera®KSC

- Indicated for Standalone or Non-standalone use
- Resilience® low-modulus, load-sharing structure
- Tesera® Trabecular porous titanium surfaces
- 2-screw, stackable design
- Single step locking screw
- No screw hole option at 5mm
(5mm height is not standalone/has no screws)

Time 0



12 Weeks



Figure 1: Pictured above is a 75µm section view from a weight-bearing Ovine study showing bone ingrowth into the Tesera trabecular structure at 12 weeks.¹

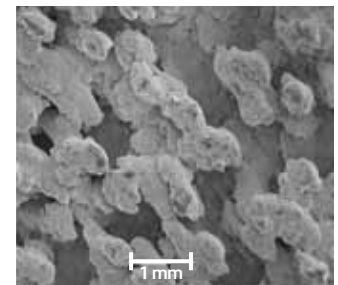


Figure 2: SEM image of the outer surface of the Tesera porous structure.²



KYOCERA Medical Technologies, Inc.
1289 Bryn Mawr Avenue, Suite A, Redlands, CA 92374
Tel: (909) 557-2360 Fax: (909) 839-6269
www.kyocera-medical.com
©2026 Kyocera Medical Technologies, Inc.
4061-004 Rev B - 5/2026

References

1. Surgeries were performed at IMDS Discovery Research (Logan, Utah); processing and analysis of the specimens was conducted by the Bone and Joint Research Laboratory (Salt Lake City, Utah). Data on file with KYOCERA Medical Technologies Inc.
2. Data on file with KYOCERA Medical Technologies Inc. SEM Evaluation. Test Report K13047307-1.

** The Ovine study data shown is representative of KYOCERA Medical Technologies' Electron Beam additively manufactured porous structure. Tesera®-K SC implants are manufactured using a laser sintering additively manufactured porous structure, but are representative of the Electron Beam porous structure.